



TEAS V 101

Presented by:

Brenda Larson & Susana Yiu, Assessment Center

Application Deadlines




TEAS V TESTS REQUIRED

- Dental Hygiene: **(Fall admission ONLY)**
 - Fall 2011 appl. deadline = February 2010
- Registered Nursing:
 - Winter 2011 appl. Deadline = October 2010
 - TEAS completed/submitted by - TBD
 - Spring 2011 appl. deadline = January 2011
 - TEAS completed/submitted by - TBD
 - Fall 2011 appl. deadline = April 2011
 - TEAS completed/submitted by - TBD





TEAS V Exam Retake Procedure

- **You may re-test once per 365 days:**
 - **Required to wait at least 30 days after the first test was taken before retake**
 - **Example: If you take your 1st TEAS test on February 1st, you may retest on or after March 4th.**
 - **If you re-take the TEAS exam, you must wait one year (365 days) before you may take the exams again.**
 - **If you've taken TEAS v.3/4, LWTC consider your 1st TEAS V as the 1st test.**
- 

Retake Procedure (continued)

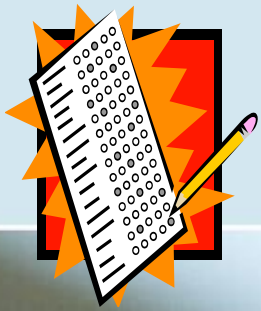
- You are responsible to plan ahead and schedule TEAS test & retest on dates that are at least 30 days apart.
- **NEW!** Check [the LWTC TEAS test / retest dates chart](#) to determine when you may test and/or retest.
- For **best choice** of test date/time, schedule your appointment at least 2-4 weeks in advance!
- If you retake the test **before 30 days**, you cannot use the test results for LWTC admissions.

TEAS Exam – the 411



- What is the TEAS V exam?
 - The Test of Essential Academic Skills is used as an admissions tool for allied-health programs such as Dental Hygiene and nursing programs.
 - *Assessment Technologies Institute, LLC (ATI)* distributes the exam, for more information see: www.atitesting.com
 - Purpose of Test: Designed to measure your skill in Reading, Mathematics, Science, and in English and Language Usage.
- TEAS is very similar - in content and format - to the NCLEX exam.

4 Components of TEAS V Exam



of Questions / Time Limit

1 Reading
(paragraph comprehension, passage comprehension, and inference/conclusion)

48 / 58 min



2 Mathematics
(whole numbers, metric conversion, fractions, decimals, algebraic equations, percentages, data interpretation, and ratio/proportion)

34 / 51 min



3 Science
(science reasoning, general science knowledge of biology, chemistry, anatomy, physiology and physical sciences)

54 / 66 min



4 English and Language Usage
(punctuation, grammar, sentence structure, contextual words, and spelling)

34 / 34 min



170 questions / 3 hours 29 minutes

TEAS Version Comparisons

Content Area	TEAS v3 / v4		TEAS V	
	# of Ques.	Minutes Allowed	# of Ques.	Minutes Allowed
Reading	40	50	48	58
Mathematics	45	56	34	51
Science	30	38	54	66
English and Language Usage	55	65	34	34
Total	170 questions 209 minutes (3 hours 29 minutes)			

IMPORTANT - LWTC accepts TEAS version V only!

Who takes the TEAS exam?

College programs decide whether or not to use the TEAS exam and/or which version to accept as an admissions requirement for programs of study in...

- **Dental Hygiene**
- **LPN & RN**
- **Radiology Tech**
- **Paramedic**



How are the TEAS Scores Used at LWTC ??

- **As an Admissions Requirement or Prerequisite for. . .**

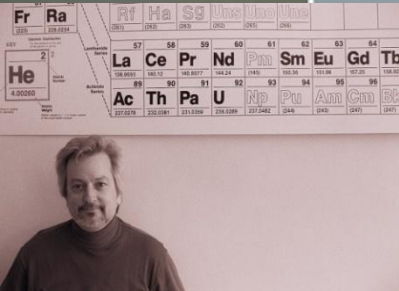
- **RN**

- LWTC's RN Selection Committee uses a points based system for admission. See Nursing Application for more information.

- **DH**

- Formula for TEAS V score available in Fall quarter 2010

- **Contact the Advising Office (W207) for details – (425) 739-8300 or advising@lwtc.edu**



How are the TEAS Exams Administered?

- **Computer Based**

- **Disability Accommodations are Available**

- **Testing Location**
LWTC Assessment Center
(W 204)

- **Testing Instructions available at**
www.lwtc.edu/assessment

- **Timing is fast paced**



- **Will use mouse and keyboard to select answers**

Contact Assessment Center Staff for a Tour if you are interested.



Before you test...get an ATI user account!

- You will need to register at www.atitesting.com before the test.
- On the day of your test, bring your **User ID and Password** for the test.
- You can always check your scores online at www.atitesting.com
- For additional score reports, you can shop for a TEAS transcripts at www.atitesting.com. Fees apply.

When do I receive my scores?



1 ■ **When your test is completed, you will print your scores from the computer.**

■ You receive one copy of your scores following the exam.

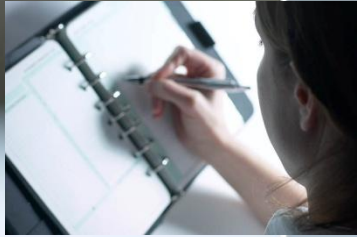
2 ■ **LWTC receives a copy of your scores automatically.**

■ **Your academic advisor reviews the test scores with you.**



How Do I Arrange to Take the Tests?

- **Schedule a testing appointment online at www.lwtc.edu/assessment, select TEAS test.**



You must have a LWTC Student ID # to make an appointment.

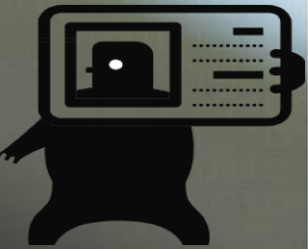
- **TEAS is available **Monday and Wednesday at 8 AM,** and **Tuesday at 9 AM & 1 PM.****

The test is 3.5 hours.



What do I need to bring to the test?

- **Photo ID** – government issued (e.g. passport, driver's license or state ID card).
- **LWTC Student ID number**
- **Payment of \$ 45.00** – check, money order, cash or credit card (Visa/MasterCard)
 - If you are taking TEAS for another college, you pay \$25 to ATI (by debit/credit card) and a \$25 proctor fee to LWTC
- **ATI username & password**



How can I prepare for the TEAS exam?



■ **ATI TEAS V Study Guide:**

- 1) Available in the LWTC Bookstore
- 2) Available in the LWTC Library
 - on Reserve (may use for 2-4 hours at a time)
- 3) Available from www.atitesting.com
- 4) Possibly available from www.amazon.com

Free!

Cost: \$42.00

■ **ATI TEAS V Online Practice Assessment:**

- One set of 100 questions, reflective of TEAS in both content and format.
- You may take the assessment two times. Each access will be exactly the same set of questions.

Cost: \$35.00



Other Excellent Resources



■ **LWTC Library & ASC**

(Located in the Technology Building – 2nd Floor)

- Several different study guides/prep materials!!!
- Good study resources:
 - GED prep for Math
 - GED prep for Reading & Writing
 - GED prep for Science
 - www.gedpractice.com
 - GED prep materials are at any public library for **FREE!**
 - COMPASS practice tests at www.act.org/compass
 - Math website: www.math.com

NOTE: Identify yourself as a person who is preparing for the TEAS exam in the Library/ASC so the staff can assist you correctly

■ **Courses at LWTC:**

- English 092 (*Reading Improvement, 5 cr*)
- English 098 (*Textbook Reading, 2 cr*)
- **RN / DH program prerequisites**

Strategies



- **Reading: comprehension and inferential thinking**

- Read science journals/textbooks and time yourself
- Use ASC resources
- SAT study guides – reading comprehension/inference and answering questions

- **Math skills (Math 70/80/90)**

- Addition/subtraction/multiplication/division
- Percent/fractions/decimals/conversions/algebra

- **Other skills**

- Test taking Workshop by Student Services Department

$$\begin{array}{r} 10784.36 \\ 5 \times 9 \div 1 \\ 2.719372 \end{array}$$



Conclusion



■ Pop Quiz –

- Retest wait period?
- What if I retest too soon?
- How to determine when you may test/retest?
- List 3 strategies for success.
- www.atitesting.com



■ Final Questions?

- Please contact Assessment Center staff for a tour of W204.

